

Announcing the 8<sup>th</sup> Annual



# GULF COAST SOFTBALL COACHES CLINIC

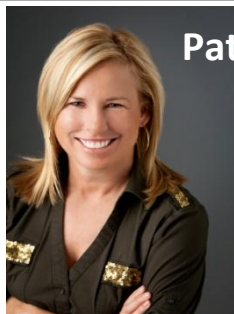


Sponsored by TMH Softball

January 5-6, 2012 (Thurs-Fri)

SAM HOUSTON RACE PARK, Houston, Texas

## 2012 FEATURED SPEAKERS



**Patty Gasso - University of Oklahoma**

18<sup>th</sup> Season as Head Coach at OU  
6 appearances at WCWS  
2000 National Champions  
17 consecutive NCAA Tourns.  
6 consecutive 50 win seasons  
Career Record 979-328-2



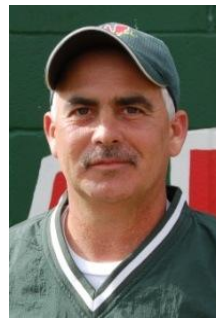
**Connie Clark - University of Texas**

16<sup>th</sup> Season as Head Coach  
Career Record: 598-270-3  
12 NCAA Tournaments (7 in a row)  
4 WCWS Appearances  
4 Big 12 Championships  
5 Big 12 Tournament Championships



**Rick Church – Blinn College**

6 Trips to NJCAA National Tourn.  
College Record of almost 600 wins.  
Natl Coaching Staff of the Year (2003)  
Midwest Region Coaching Staff of the Year in 2003, 2004, 2008, 2010



**Richard Jorgensen**

**The Woodlands High School**  
2011 Texas & National Champions  
2011 NFCA National Coaching Staff of the Year  
Over 200 wins in 6 years at TWHS



**Robert Andrews**  
**The Institute of Sports Psychology Houston**

Works w/HS, College, Pro, Olympic athletes  
Specialist: Sports Performance/Overcoming Injuries/Team Building  
[www.tinssp.com](http://www.tinssp.com)

TENTATIVE SCHEDULE (full schedule will be available on [www.texasprepsoftball.net](http://www.texasprepsoftball.net).)

Thursday, Jan 5

5:00-5:45:

Jorgensen

6:15-8:00:

8:00:

Friday, Jan 6

9:00-9:45:

10:00-10:45:

11:00-11:45:

12:00-12:45:

SESSION 1: Richard

SESSION 2: Patty Gasso  
BUFFET DINNER/HAPPY HOUR/OFF TRACK BETTING

SESSION 3: Rick Church  
SESSION 4: Robert Andrews

SESSION 5: Connie Clark  
SESSION 6: Connie Clark

### BENEFITS OF CLINIC

- Thursday & Friday sessions with outstanding collegiate & high school coaches.
- Buffet Dinner on Thursday night after sessions and during off-track betting time.
- Time to visit with coaches during breaks and social sessions to discuss softball and have a fun evening before the season starts.
- Headquarters Hotel: Hilton Garden Inn – Houston NW
  - 7979 Willow Chase Blvd., Houston, TX 77070
  - Telephone: 832-912-1000
  - Online Reservation page at [www.texasprepsoftball.net](http://www.texasprepsoftball.net)
  - Clinic Room Rates for 2012 (as available – deadline is Jan 1, 2012)
    - King -- \$69;
    - King w/sofabed -- \$79;
    - 2 Double Beds -- \$79

**Registration -- \$90.00 if postmarked before Jan. 1, 2012 / \$100.00 after**  
**Online Payment available**

# 2012 GULF COAST SOFTBALL COACHES CLINIC REGISTRATION FORM

School/Organization \_\_\_\_\_

Coaches \_\_\_\_\_

BILLING Address \_\_\_\_\_

City \_\_\_\_\_ State \_\_\_\_\_ Zip Code \_\_\_\_\_

Phone \_\_\_\_\_

E-mail \_\_\_\_\_

## Payments Available:

CASH

CHECK (Make Checks out to "TMH SOFTBALL")

CREDIT CARD (Go to [www.texasprepsoftball.net](http://www.texasprepsoftball.net)) to register online.

Registration Fee: \$90.00 (IF POSTMARKED BY JAN 1, 2012)

Fee = \$90.00 x # of coaches \_\_\_\_\_ = \$ \_\_\_\_\_

After Jan 1, 2012 & at door, FEE is \$100.00

Online Payment available

All Coaches from one school can be paid for by the same school check.

Personal checks accepted. Credit Cards are accepted in advance and at the door – go to [www.texasprepsoftball.net](http://www.texasprepsoftball.net) to register online.

**REFUND POLICY: Refund Requests (less \$25) must be submitted in writing and postmarked or emailed by January 1, 2012. After that date, no refunds will be issued as long as the clinic is held. Substitutions may be made for coaches who pre-register, but can't attend as long as the clinic is notified by January 5, 2012.**

Send Pre-Registration to:

**TMH Softball**

**3702 Dove Hollow Ln.**

**College Station, TX 77845**

**Phone (979) 236-3832**

[Gulfcoastclinic@texasprepsoftball.net](mailto:Gulfcoastclinic@texasprepsoftball.net)

## MAP TO SAM HOUSTON RACE PARK

### **Physical & Mailing Address:**

Sam Houston Race Park  
7575 N. Sam Houston Parkway West  
Houston, Texas 77064

Coming from Dallas on I-45:

- Exit west on Sam Houston Tollway.
- Exit at Gessner and Uturn under tollway and SHRP will be on your right.

Coming from Austin, Waco, Bryan/College Station on US 290:

- Exit east on Sam Houston Tollway.
- Exit at Gessner and continue until you get to SHRP on right.

Coming from East (Beaumont, South Louisiana) on I-10.

- Exit north on Sam Houston Parkway and follow all the way around until you get to exit at Gessner (crossing US 59 and I-45).
- Uturn under tollway and SHRP will be on your right.

Coming from Southwest – US 59 from Victoria, Corpus Christi, and the Valley.

- Exit on Sam Houston Tollway north and cross I-10, and US 290.
- Exit at Gessner and SHRP will be on your right.

Coming from West – San Antonio – I-10

- Exit on Sam Houston Tollway north and cross US 290.
- Exit at Gessner and SHRP will be on your right.

Coming from South (I-45 and SH 288)

- Come all the way through Houston on I-45 and exit Sam Houston Tollway to the east.
- Exit at Gessner and uturn. SHRP will be on your right.

Or

- Follow Sam Houston Tollway all the way around Houston and Exit at Gessner either way.

